

Human iPS Cells' Test Result

Conditions

Materials

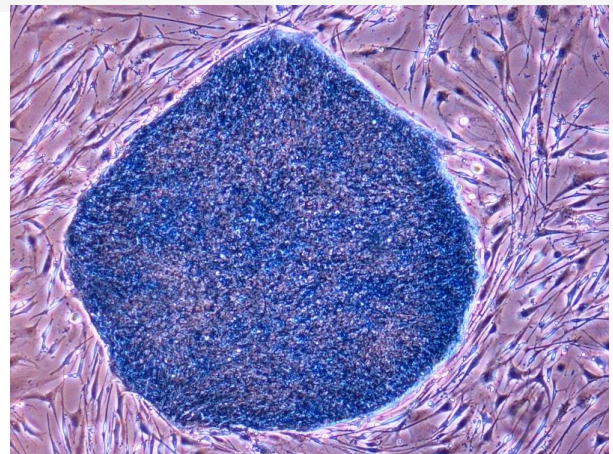
- Cell: Human iPS Cells 201B7: K.Takahashi,K.Tanabe,M.Ohnuki,M.Narita,T.Ichisaka,K.Tomoda and S.Yamanaka,Cell 131,1-12(2007)
- Dish: Easy Grip Dish 35mmDish (Fine Plus International Ltd., S35-DC12)
- Coating agent: ReproCoat (ReproCELL Incorporated RCHEOT001)
- Medium: Primate ES Cell Medium (ReproCELL Incorporated RCHEMD001) + 5ng/mL bFGF
- MEF(ReproCELL Incorporated RCHEFC003)
- Cell peeling solution: Dissociation Solution for human ES/iPS Cells(ReproCELL Incorporated RCHETP002)

Culture Period

4 Passages (Cultivated for 14 days)

Result

As a result, the Human iPS cells can be cultivated without problems with the FPI' s dishes. (Below)



ALP staining of the Human iPS cells



19th October 2009

ReproCELL Incorporated

<http://www.reprocell.com/en/>

FPI' s Easy Grip Dish was used for this evaluation (S35-DC12)

Fine Plus International Ltd.,
2, Nakagawara, Kamitoba, Minami-ku, Kyoto 601-8142,